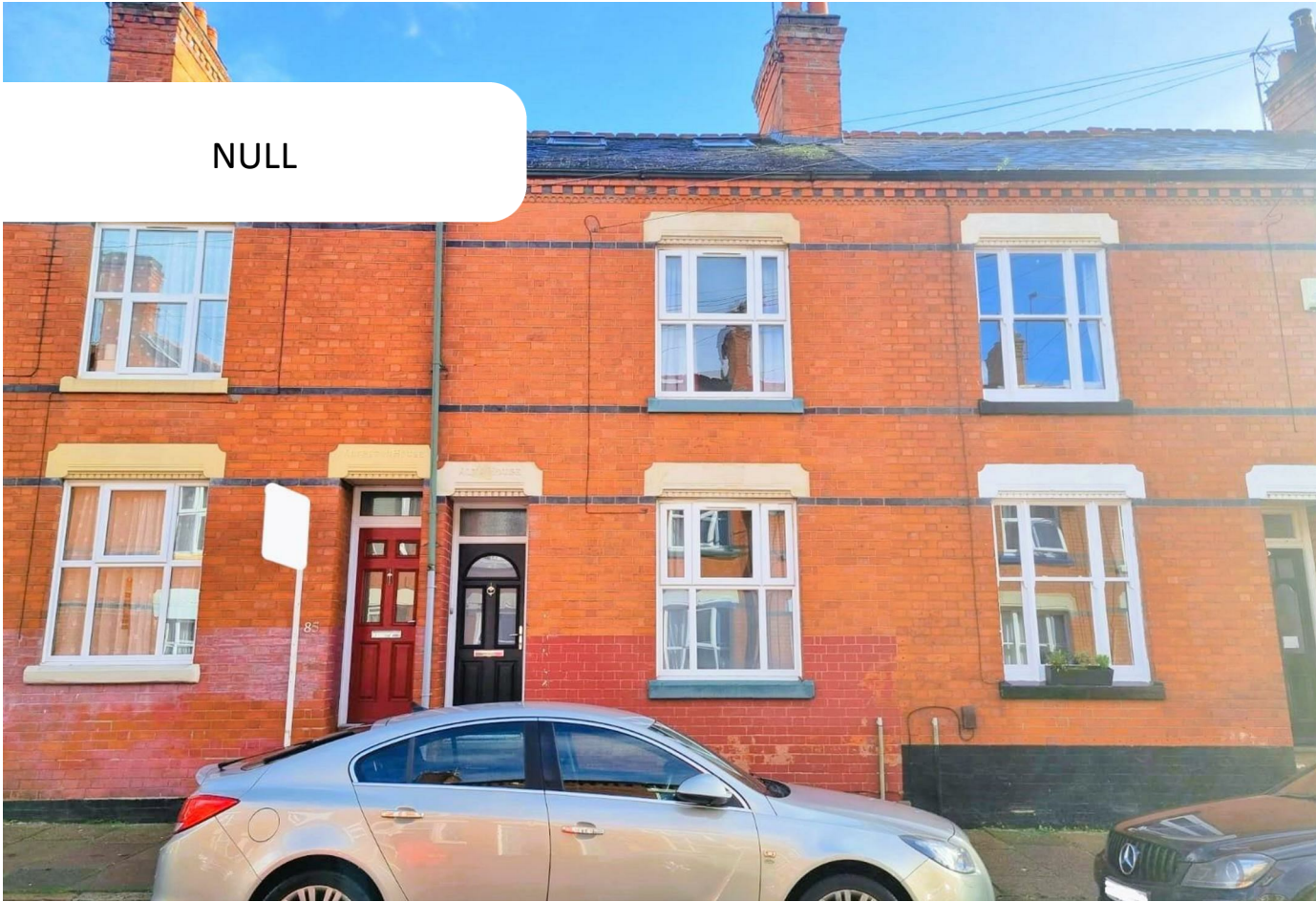


NULL



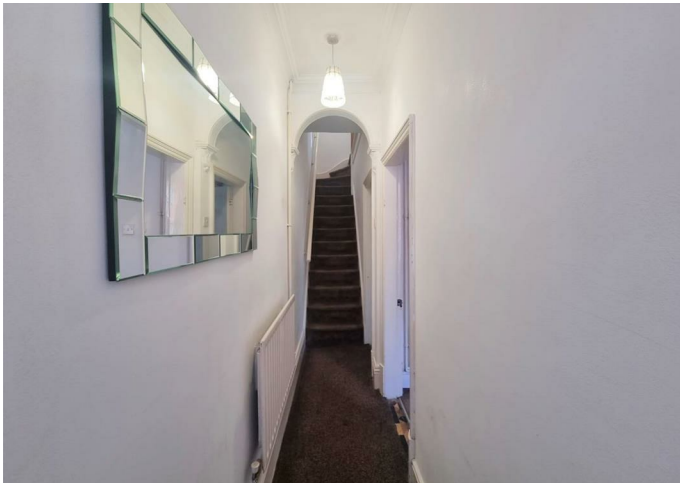
House - Terraced

HOWARD ROAD LEICESTER LE2 1XP

£287,500

FEATURES

- 4 Bedroom House
- 2 Reception Rooms
- Bathroom + Shower Room
- Double Glazing
- 3 Storeys
- Kitchen
- Gas Central Heating
- Close to Local Shops



 **SETHS**

4 Bedroom House - Terraced located in Leicester

NO CHAIN

Seths are proud to market this 4 Bedroom Mid-Terraced House on Howard Road, ideally located in the Clarendon Park area.

The property is close to Queens Road, local Shops and amenities, has exceptional transport links and also is a walking distance to Victoria Park.

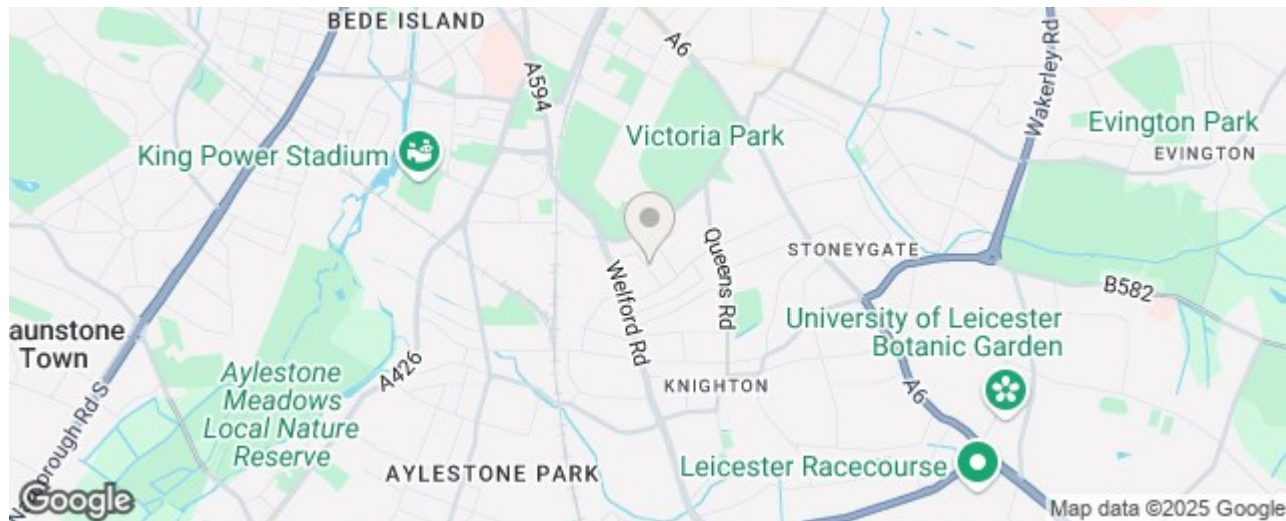
Upon walking through the Front Door, there is a Hallway providing access to the Lounge and Dining Room. Leading on from the Dining Room is the Kitchen which consists of wall and base units with worktops over, sink and electric cooker.

On the First Floor, there are two spacious Bedrooms and the Master Bathroom inclusive of a bath with shower over, separate shower cubicle, wash basin and W.C.

On the Second Floor, there are a further two Bedrooms and a shower room inclusive of shower cubicle, wash basin and W.C.

The property benefits from gas central heating and double glazing throughout. There is an open garden to the rear of the property.

Contact Seths to arrange a viewing.



Call us on
0116 266 9977

sales@seths.co.uk
www.seths.co.uk

Council Tax Band

B

Energy Efficiency Rating

	Current	Potential
<i>Very energy efficient - lower running costs</i>		
(92 plus) A		
(81-91) B		85
(69-80) C	70	
(55-68) D		
(39-54) E		
(21-38) F		
(1-20) G		
<i>Not energy efficient - higher running costs</i>		
England & Wales	EU Directive 2002/91/EC	

Agents Note: Whilst every care has been taken to prepare these particulars, they are for guidance purposes only. All measurements are approximate and are for general guidance purposes only and whilst every care has been taken to ensure their accuracy, they should not be relied upon and potential buyers are advised to recheck the measurements.

